

# Surface expertise from a single source. Guaranteed.

**HE HOMAG**

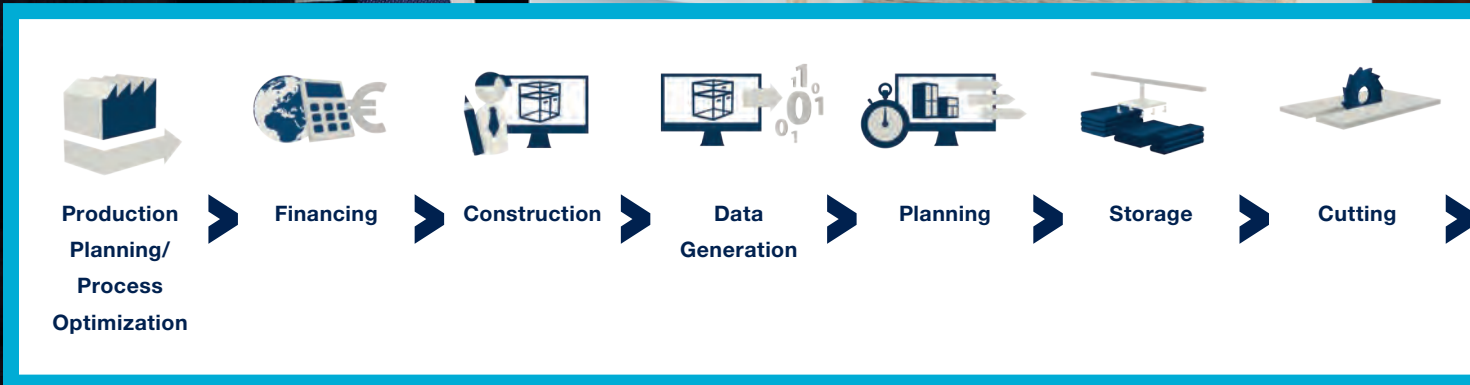
**HOMAG – The Surface Specialist**  
in the areas of coating, sanding, moulding and  
laminating

**YOUR SOLUTION**

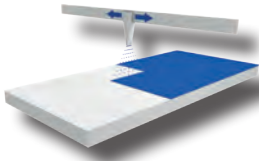




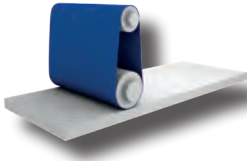
**Josef Zerle**  
Executive Director Surface Processing, HOMAG



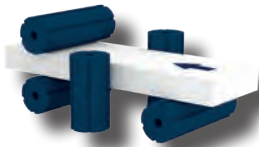




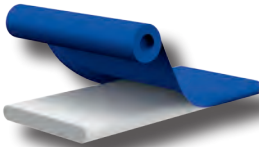
Coating



Sanding



Moulding

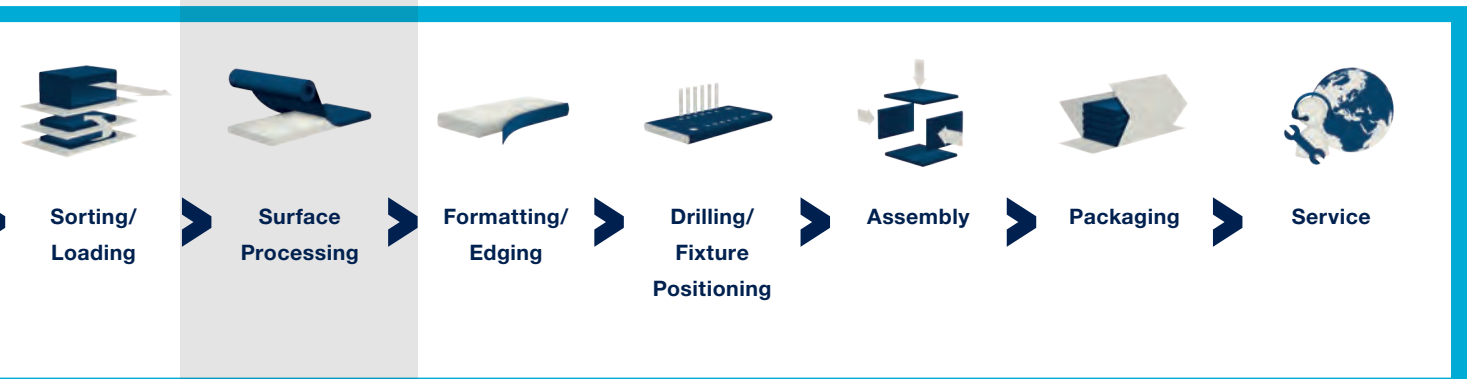


Laminating

## Quality from a single source: HOMAG. **YOUR SOLUTION.**

We are the world's leading manufacturer of machines and systems for the woodworking industry and carpentry shops. As a global player, we operate international production plants as well as sales and service companies. With around 6600 employees, we have a presence in more than 100 countries and an estimated global market share of approx. 30%. Our customers use high-tech machines and systems of the HOMAG Group to produce home and office furniture, kitchens, parquet and laminate flooring, windows, doors, staircases, and even complete prefabricated timber-frame buildings.

The range of machines and systems available extends from individual machines for carpentry shops businesses to complete, networked production lines for highly industrialized, individual furniture production. Our wide range of services related to the machines and systems together with the corresponding control software makes our offering unique.



## From manual spray coating to automated finishing equipment.

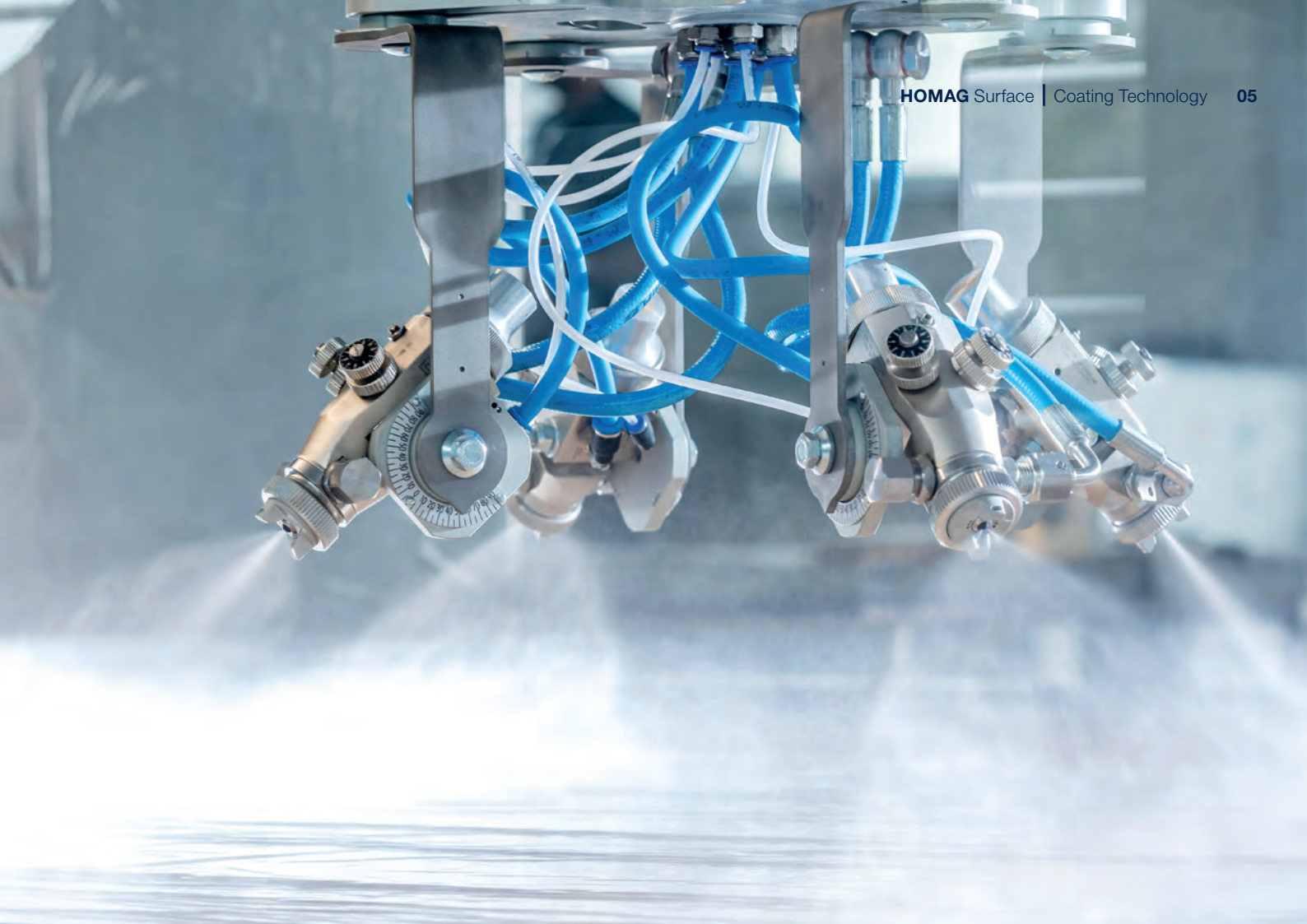
Trends change, often within short periods of time. However, the demand of many end customers for high-quality furniture surfaces remains.

As a manufacturer, the best way to meet your customers' demand for first-class furniture and well-made interior fittings is with spray coated surfaces. Painted workpieces set themselves apart with their excellent properties. Surfaces and edges can be completely coated in one path without joints. They offer resistant surfaces as well as an impressive look and feel.

Whether you manufacture furniture, kitchens, interior fittings, stair components or doors and no matter whether they are made of solid wood or wood-based panels: With the SPRAYTEQ S-100 spraying machine, HOMAG offers you the suitable entry into high-quality finished surfaces.

Together with our partner, Makor, we are a complete supplier in the area of processing (sanding/coating) flat and profiled components.





**Your benefits:**

- **Cost reduction** due to economical use of coatings (reduced overspray)
- **High surface quality** thanks to industrial technology used in the trade
- **Process stability** thanks to simple settings regardless of the operator (reproducibility)
- **High flexibility** thanks to batch size 1, fast color changes

Only requires **14** square meters  
of installation area

Can also produce batch size

**1**  
efficiently

**2,400** parts  
can be finished per shift









Up to **5** heads in a single machine frame

Working width

**1,350** mm  
1650 mm as an option

**10<sup>5</sup>** head combinations

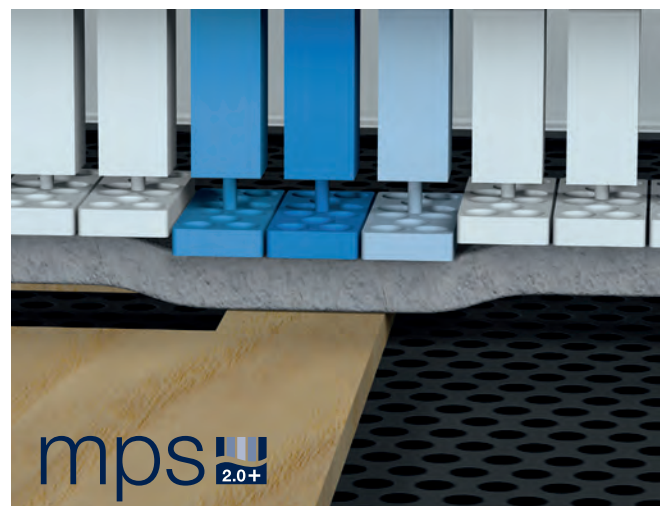
## HOMAG wide-belt sanding machines for innovative surface processing

For more than 70 years, HOMAG sanding technology has been renowned for its powerful wide-belt sanding machines and innovative surface processing. This includes special and universal sanding machines for calibration, fine sanding and lacquer sanding. Always focused on processing wood

and wood-like materials. As the basis for sanding tasks in surface processing solutions, HOMAG offers a wide range of basic machines, units and options to meet customer-specific solutions. All for the right sanded surface because well sanded is almost coated.

### Your benefits:

- **Flexibility** thanks to variable machine configurations
- **Sophisticated** technology — proven thousands of times over
- **High-gloss varnish sanding** thanks to Q-Head and patented X-Head
- **Adaptable** thanks to mps 2.0 plus — high-precision triggering of sanding segments for the most demanding sanding tasks
- **Ergonomic and intuitive** thanks to the consistent processing height and powerTouch control





# The full-blown Surface Product Portfolio...

## Panel Processing

<b>SANDING</b>	<b>Wide Belt Sanders Top</b>	
	 <p><b>SANDTEQ W-100</b> The perfect entry machine</p>	 <p><b>SANDTEQ W-200</b> Up to 2 aggregates</p>
	 <p><b>SANDTEQ W-300</b> Up to 4 aggregates</p>	 <p><b>SANDTEQ W-700</b> Up to 5 aggregates</p>
	 <p><b>SANDTEQ W-900</b> Up to 5 aggregates and SORB TECH machine bed</p>	
	<b>Wide Belt Sanders from Top and Bottom</b>	
 <p><b>SANDTEQ B-700</b> Sanding Lines</p>		
<b>Edge Sanders</b>		
 <p>Throughfeed Edge Sanders</p>		

<b>FINISHING</b>	 <p><b>SPRAYTEQ S-100</b> 1 spray arm</p>
	 <p>Coating with robot arm</p>
	
	 <p>UV Drying Oven</p>
	








## Profile Processing

<b>MOULDING</b>	<b>Profiling</b>	
	 <p><b>MOULDTEQ M-300</b> Up to 8 spindles</p>	<b>HOMAG</b>
<b>SANDING</b>	<b>Profile Sanders</b>	
	 <p>Throughfeed Profile Sanders</p>	<b>makor</b>

<b>FINISHING</b>	
	 <p>Spraying</p>
	 <p>UV Drying Oven</p>



<b>Coating</b>		<b>LAMINATING</b>	<b>Flat Laminating</b>	
	<b>makor®</b> 2 spray arms			<b>KE HOMAG</b> <b>LAMTEQ F-200</b> Sheetware and Foil
	<b>makor®</b> Roller Coater			<b>KE HOMAG</b> <b>LAMTEQ F-200</b> Sheetware and Handling
	<b>makor®</b> Edge Coating			<b>KE HOMAG</b> <b>LAMTEQ F-300</b> HighPerformance
<b>Ovens</b>			<b>Panel Wrapping</b>	
	<b>makor®</b> Linear Convection Oven		<b>KE HOMAG</b> <b>LAMTEQ F-300</b> HighPerformance	
	<b>makor®</b> Vertical Convection Oven			

<b>Impregnating</b>		<b>WRAPPING</b>	<b>Profile Wrapping Preparation</b>	
	<b>makor®</b> Impregnating			<b>KE HOMAG</b> Fleece Application
<b>Coating</b>				<b>KE HOMAG</b> Primer Application
	<b>makor®</b> Vacuum Coating		<b>Profile Wrapping</b>	
<b>Ovens</b>				<b>KE HOMAG</b> Veneer Strips
	<b>makor®</b> Convection Oven		<b>KE HOMAG</b> Foil	

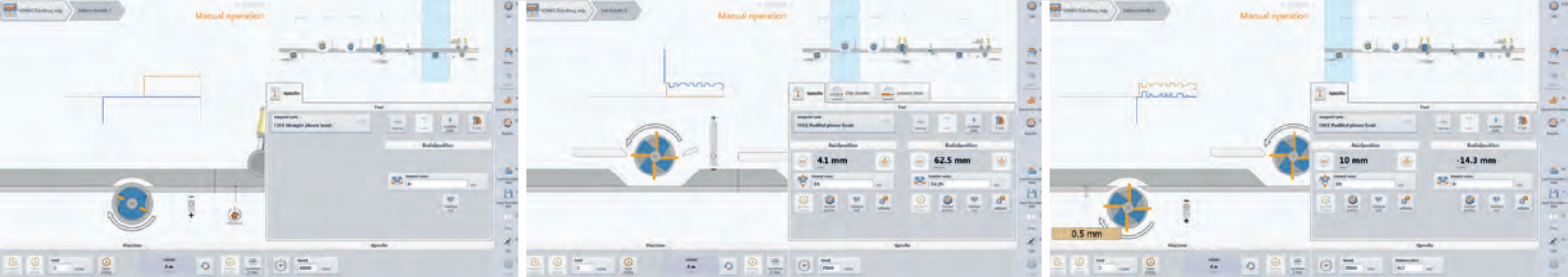
## From four-sided planing to complete profile processing, we have everything covered

With our MOULDTEQ machines, the days of the pushbutton are over. The moulder combines state-of-the-art technology with solid mechanical engineering. In this way, you get intuitive machine operation and maximum quality in one machine and you will be optimally prepared for the future. The workpiece is guided by linear ruler through the machine and held in place by pressure rollers. Through diverse tools,

our clients have the ability to even profile or cut the workpiece during the planing process. On each normal spindle configuration there's the possibility to add a universal spindle at the end. This spindle is 360° moveable and offers the possibility to be always on the right place, where you need it the most. If you need frequent changes between multiple spindle configurations, this is the best option for you.







**Your benefits:**

- **Optimum surface quality** thanks to variable spindle speed and feed rate
- **High precision** due to cast iron frame
- **Rapid tool changes** thanks to the ProLock® spindle clamp
- **Intuitive user guidance** with profile preview and tool database



**5-8** spindles with variable feed speed

Variable spindle speed from 2nd spindle onwards of

**4,000-8,000** rpm for optimal workpiece quality

Workpieces with

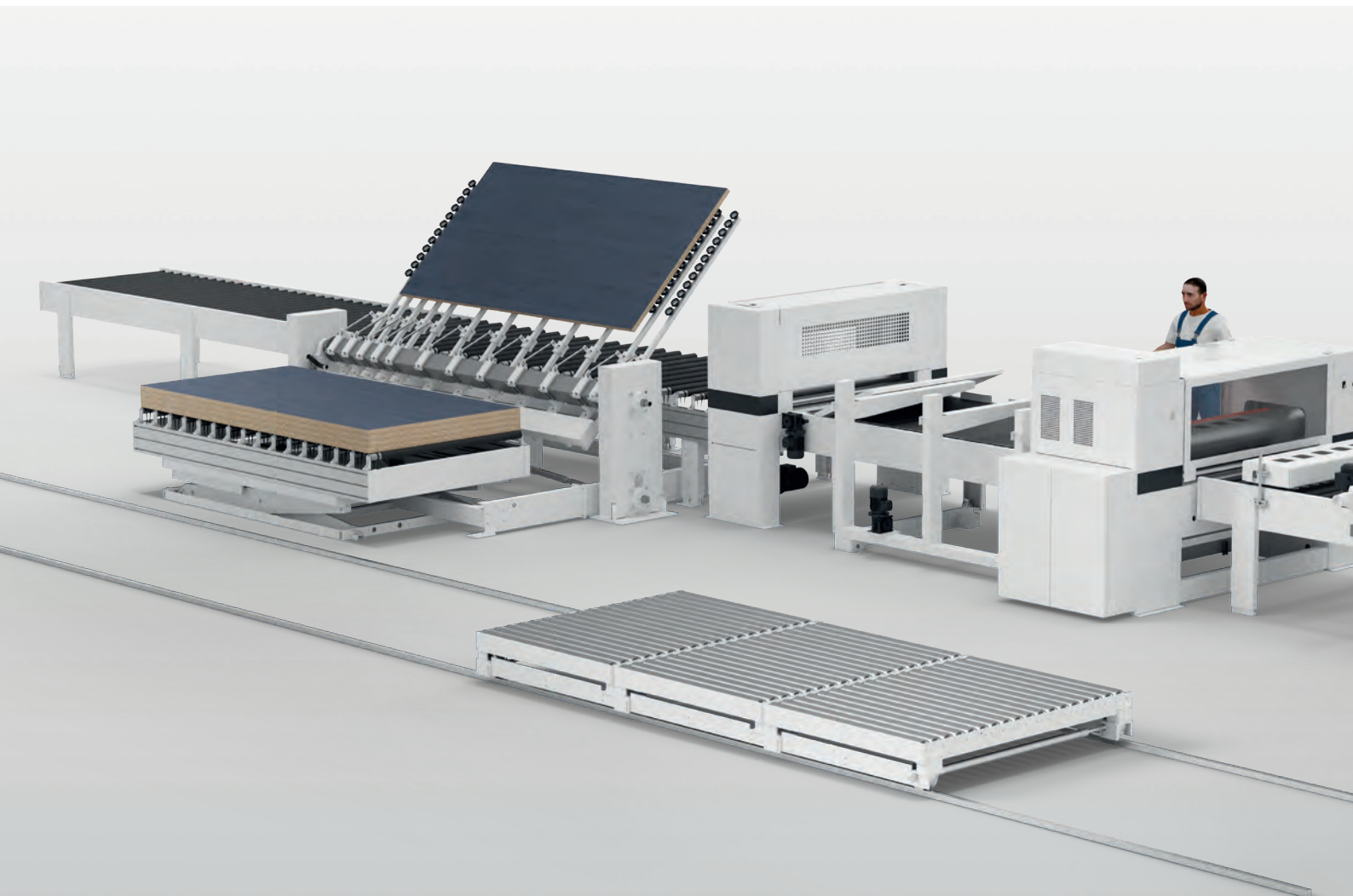
**300** mm length possible

## Flexible and smart solutions for laminating

Thanks to its modularity and flexibility, as well as the diverse application possibilities of PUR adhesives, the HOMAG LAMTEQ F-200 laminating machine can be integrated into a variety of system concepts.

The handling concept allows operation of the machine with fewer personnel and saves operators from physically strenuous lifting, carrying and turning of bulky panels. The partially automated handling solution consists of a vacuum suction rail in the inlet, an automatic panel turner behind

the plant and a stack return. With this solution, the entire workpiece transport can be completed by just one person. Together with an operator for laying-up the coating material, the laminating unit is safe and convenient enough for just two people to operate. Furthermore, the optimized part flow increases the productivity of the plant, as walking time and manual parts handling is minimized and the operators can focus on tasks that add value. In summary: More laminated parts with fewer personnel.



**Handling concept of the LAMTEQ F-200**  
with vacuum suction unit, panel turner and stack return



Up to  
**600**  
 coatings per shift

Workpiece widths up to  
**1,700**  
 millimeters in the standard version



**Key information on the LAMTEQ F-200 series:**

- Focused on PUR adhesive
- Single-sided lamination of the surfaces from the top
- Modular machine concept allows different configurations of line layouts
- HOMAG offers manual or fully automated solutions for any capacity or application



Workpieces laminated in throughfeed. Glued with PUR.





## HOMAG LifeCycleServices

The sale of our machines comes with all-in optimum service backup and individual advice. We provide support through service innovations and products that are tailored exactly to your company's requirements. With short response times

and fast customer solutions we guarantee consistently high availability and economical production – over the entire life cycle of your machine.



### Remote Service

- Hotline support via the remote service for the control system, mechanics, and process technology. Thus the on-site service can be reduced by more than 90 %!
- ServiceBoard reduce the costs through fast help in case of troubles by mobile live video diagnosis, online service message and the online spare parts shop eParts



### Spare Parts Service

- Identify, query and order spare parts directly 24/7 via [www.eParts.de](http://www.eParts.de)
- Local parts available worldwide through sales and service companies, as well as sales and service partners
- Reduction of downtime through defined spare parts and wear parts kits



### Modernization

- Keep your machinery up-to-date and increase your productivity as well as your product quality. This is how you can meet tomorrow's requirements today!
- We support you with upgrades, modernization as well as individual consultancy and developments





**HOMAG Finance –  
precisely the right financing**

- We offer you tailored financing proposals for your machinery or plants. Our financial advice goes hand in hand with our expertise relating to technical questions. Your personal contact partner will take care of the entire process.
- The benefit for you: The ability to invest without delay in new technologies and remain financially flexible.

**1,200**  
Service employees around the world

**5,000**  
customer in training / year

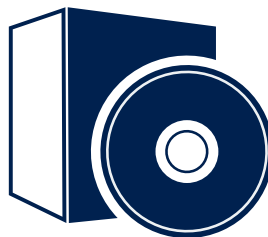
**> 90%**  
less on-site-services through successful remote diagnosis

**> 150,000**  
machines electronically documented in 28 languages in eParts



**Trainings**

- The trainings perfectly suit to your requirements. Through this your machine operators can operate and maintain the HOMAG machines optimally.
- The training courses also include customer-specific training documents with practice-proven exercises



**Software**

- Telephone support and consultancy through software support
- Digitalization of your sample parts via 3D scanning saves time and money compared to new programming
- Subsequent networking of your machinery with intelligent software solutions ranging from construction to production



**Field Service**

- Increased machine availability and product quality by certified service staff
- Regular checks through maintenance / inspection guarantee the highest quality of your products
- We offer you the highest availability of technicians in order to reduce downtimes in case of unpredictable troubles

**HOMAG Group AG**  
info@homag.com  
www.homag.com



**YOUR SOLUTION**