

Catalogue
Innovation is our impetus

Accessories



The detail makes the difference
Latest technology for highest precision.

Content

Accessories

Products	Page
Clamping wedges / dummy pieces	364-365
Screws	366-368
Keys / wrenches.	369-370
Installation devices.	371
Ball bearing liner	372
Conical wiper	373
Reducing ring for circular sawblades	374

Clamping wedges

Planer head with pressure jaws

Denomination	Dimension mm	DT	Order No.
Clamping wedge	80	◇	10157182
Clamping wedge	100	◇	10157183
Clamping wedge	130	◇	10157222
Clamping wedge	150	◇	10157223
Clamping wedge	180	◇	10157336
Clamping wedge	210	◇	10157227
Clamping wedge	230	◇	10157335
Key	SW5	◇	10160237

Centrifugal planer head

Denomination	Dimension mm	DT	Order No.
Clamping wedge	60	◇	10157230
Clamping wedge	80	◇	10157242
Clamping wedge	100	◇	10157243
Clamping wedge	130	◇	10157244
Clamping wedge	150	◇	10157245
Clamping wedge	170	◇	10157239
Clamping wedge	180	◇	10157246
Clamping wedge	190	◇	10157184
Clamping wedge	230	◇	10157247
Clamping wedge	240	◇	10157241

Clamping jaws for TOK planer heads

Denomination	Dimension mm	DT	Order No.
Clamping wedge	6,5		10157160
Clamping wedge	7,6	◇	10157229
Clamping wedge	10	◇	40001968
Clamping wedge	10,5	◇	10028146
Clamping wedge for rebate cutter	28	◇	10023051
Clamping wedge for glue joint cutter	48	◇	10157157
Clamping wedge	48	◇	10110635
Clamping wedge for rebate cutter	48	◇	10017268
Clamping wedge for rebate cutter	58	◇	10017269
Clamping wedge for glue joint cutter	58	◇	10110422
Clamping wedge	78	◇	10110637

Spare parts for swivel cutter head

Denomination	Dimension mm	DT	Order No.
Swivelling element for B 50 mm	48	◇	10110639
Swivelling element for B 80 mm	78	◇	10112938

Clamping wedges for profile knives

Denomination	Dimension mm	DT	Order No.
Clamping wedge	17,5	◇	10157128
Clamping wedge	26	◇	10157129
Clamping wedge	38	◇	10016489
Clamping wedge	48	◇	10018714
Clamping wedge	58	◇	10016488
Clamping wedge	84	◇	10021472

Clamping wedges / dummies for serrated profile cutter heads

Denomination	Dimension mm	DT	Order No.
Clamping wedge	40	◇	40011422
Clamping wedge	50	◇	10110628
Clamping wedge	60	◇	10110631
Clamping wedge	80	◇	10110393
Clamping wedge	100	◇	40011650
Clamping wedge	130	◇	10110395
Clamping wedge	150	◇	10110396
Clamping wedge	190	◇	10110397
Clamping wedge	230	◇	10110398
Dummy piece	40	◇	10110783
Dummy piece	50	◇	10110784
Dummy piece	60	◇	10110785
Dummy piece	80	◇	10110786
Dummy piece	100	◇	40011604
Dummy piece	130	◇	40015377
Dummy piece	150	◇	10110787
Dummy piece	180	◇	10110788
Dummy piece	230	◇	40012096

Clamping wedges for routers

Denomination	Dimension mm	DT	Order No.
Clamping wedge for routers	D 10/11 x 25	◇	10006194
Clamping wedge for routers	D 12 x 20	◇	10006195
Clamping wedge for routers	D 12 x 30	◇	10006196
Clamping wedge for routers	D 14 x 30	◇	10006198
Clamping wedge for routers	D 16 x 50	◇	10006199
Clamping wedge for routers	28 mm rh	◇	40013574
Clamping wedge for routers	35 mm rh	◇	10006184
Clamping wedge for routers	38 mm	◇	10016489
Clamping wedge for routers	58 mm	◇	10016488

Screws

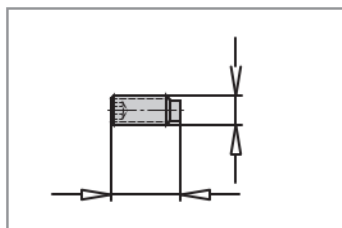


Fig.: Threaded pin DIN 915

Denomination	Dimension mm	Key size	Order No.
Threaded pin DIN 912 for swivelling cutter head	M5 x 16		10030678
Threaded pin DIN 912 for swivelling cutter head	M6 x 8		10015777
Threaded pin DIN 915	M8 x 16	SW 6	40002009
Threaded pin DIN 915	M8 x 35	SW 6	40002014

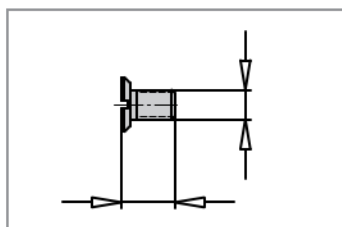


Fig.: Countersunk screw DIN 963

Denomination	Dimension mm	Key size	Order No.
Countersunk screw DIN 963	M5x8	slot	40001969
Countersunk screw DIN 963	M5x6	slot	10119194
Countersunk screw DIN 7991	M5 x 6	SW 4	40001968
Countersunk screw DIN 7991 T	M5 x 6,1	T 20	40005305

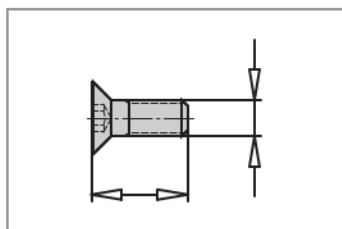


Fig.: Countersunk screw DIN 7991

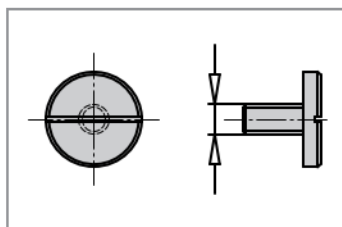


Fig.: Stop screw

Denomination	Dimension mm	Order No.
Stop screw	M5	40002938
Stop screw for panel raising cutter	M6x10	10157166

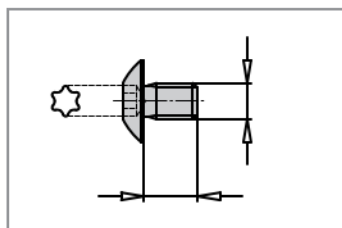
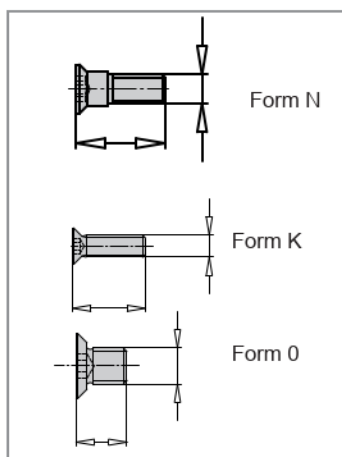


Fig.: Torx clamping screw, big head

Denomination	Dimension mm	Key size	Order No.
Torx clamping screw, big head	M4 x 5,9	T 15	10006039
Torx clamping screw, big head	M4 x 4	T 15	10006040
Torx clamping screw, big head	M3,5 x 4	T 15	10006038
Torx clamping screw, big head	M3,5 x 6	T 15	10123471
Torx clamping screw, big head	M4 x 59	T 15	40004987



Denomination	Dimension mm	Key size	Order No.
Torx countersunk screw form N	M5 x 15,5	T 20	40012392
Torx countersunk screw form K	M5 x 12	T 20	10111291
Torx countersunk screw form O	M5 x 7	T 15	10106762
Torx countersunk screw form N	M5 x 11	T15	33014425
Torx countersunk screw form N	M5 x 13	T 20	10110740

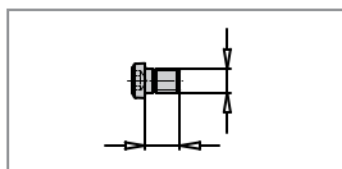
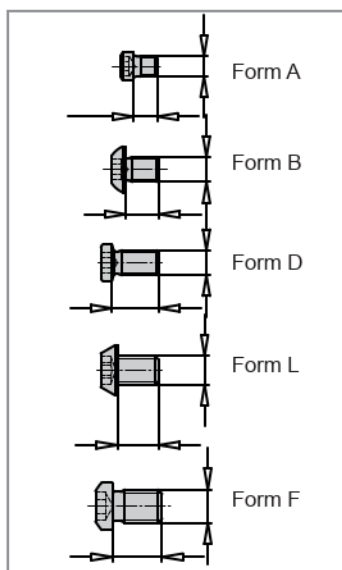


Fig.: Torx countersunk screw C

Denomination	Dimension mm	Key size	Order No.
Torx round-head screw form C	M3 x 4,4	T 8	10006061



Denomination	Dimension mm	Key size	Order No.
Torx clamping screw form A	M2,5 x 3,0	T 8	10006055
Torx clamping screw form A	M2,5 x 4	T 8	10006056
Torx clamping screw form B	M3 x 4,0	T 9	10006060
Torx clamping screw form D	M3 x 7	T 8	10006057
Torx clamping screw form L	M3,5 x 4,0	T 15	10006052
Torx clamping screw form D	M3,5 x 5,5	T 15	10006058
Torx clamping screw form L	M3,5 x 4,8	T 15	10006053
Torx clamping screw form A	M4 x 5	T 15	10006063
Torx clamping screw form F	M4 x 6	T 15	10006064

Screws

Denomination	Dimension mm	Order No.
Hexagonal nut	M6	40013544
Hexagonal nut	M4	40013542
Hexagonal nut	M6 narrow	40015859

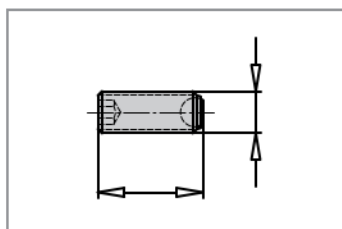


Fig: Ball pressure screw

Denomination	Dimension mm	Key size	Order No.
Cover screw DIN 963	M3,5 x 6,0		10006006
Ball pressure screw form B	M8 x 12	SW 4	10006035
Ball pressure screw form B	M6 x 10	SW 4	40013521

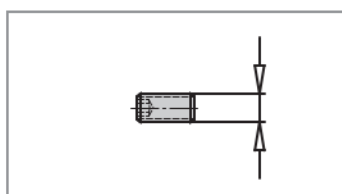


Fig.: Threaded pin for counterbore DIN 913

Denomination	Dimension mm	Key size	Order No.
Threaded pin for counterbore DIN 913	M6 x 6	SW 5	10005963
Threaded pin for counterbore DIN 916	M6 x 5	SW 5	40001977
Threaded pin for counterbore DIN 916	M6 x 4	SW 5	10032695
Threaded pin for counterbore DIN 916	M5 x 4	SW 4	10033834

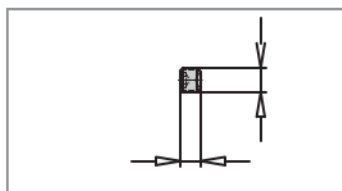


Fig: Threaded pin for counterbore DIN 916

Length adjustment screw for bore	M5 x 8	slot	10006037
Length adjustment screw, special design	M5		40013523

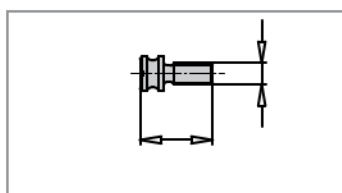
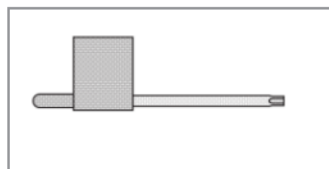
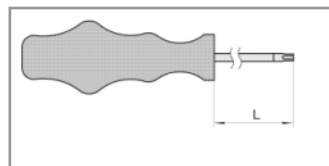


Fig: Length adjustment screw

Keys



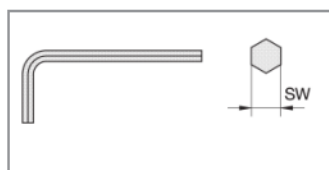
Denomination	Dimension mm	Key size	Order No.
Flag-type-key		T 7	10006042
Flag-type-key		T 8	10006043
Flag-type-key		T 9	10020371
Flag-type-key		T 15	10006049



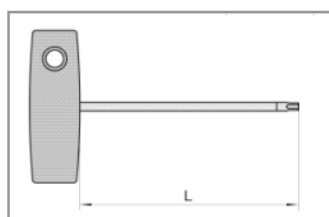
Handle key	L 60	T 8	10006044
Handle key	L 60	T 9	10006045
Handle key	L 80	T 10	10006047
Handle key	L 80	T 15	10006050
Handle key	L 100	T 20	10006041



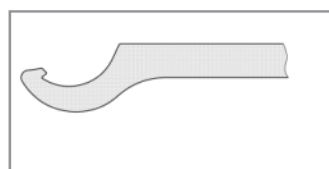
Sliding bar key	L 100	T 9	40004177
Sliding bar key	L 100	T 10	40005684
Sliding bar key	L 100	T 15	40005685
Sliding bar key	L 100	T 20	40005686



Allen key		SW 2	40005625
Allen key		SW 3	10006089
Allen key		SW 4	40009460
Allen key		SW 5	40009461
Allen key		SW 6	10014156
Allen key		SW 8	40013533
Allen key		SW 10	10138894

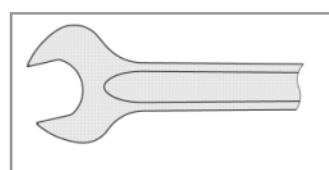


Sliding bar key	100	SW 3	10017980
Sliding bar key	100	SW 4	40004852
Sliding bar key	100	SW 5	40005680
Sliding bar key	100	SW 6	40005681
Sliding bar key	150	SW 8	40004852
Sliding bar key	150	SW 8	40013539
Sliding bar key	100	SW 10	40013540
Sliding bar key	200	SW 10	40013541



NEW Hook wrench	30/32		10205522
Hook wrench	40/42	M 30 x 1,5	10006109
Hook wrench	45/50	M 40 x 1,5	10006110
Hook wrench	52/55	M46	10180589
Hook wrench	58/62	M 48 x 2,0	10006111
Hook wrench	ER16 mini	M19x1	10174977

NEW Combination hook spanner key	53 and 58/62		10203800
---	--------------	--	----------



Open-jaw wrench		SW 13	40013548
Open-jaw wrench		SW 27	10028508
Open-jaw wrench		SW 33	40013549
Open-jaw wrench		SW 41	40013551
Open-jaw wrench		SW 46	10019055
Open-jaw wrench		SW 60	40013552

Keys / wrenches



Torque spanner

	Denomination	Tool holder mm	Nm	Order No.
NEW	Torque spanner Type 1	14 x 18	60-320	10203818
NEW	Torque spanner Type 2	9 x 12	20-120	10205397

Delivery without hook spanner key / roller wrench.

Hook spanner key / roller wrench

	Denomination	for torque spanner	for D mm	Adapter mm	Order No.
NEW	Combination hook spanner key	Type 1	53 and 58/62	E 462	10203820
NEW	Hook spanner key	Type 1	50	ER 32	10203822
NEW	Roller wrench	Type 2	30	ER 16	10205398

Installation devices

Mounting rack for all standard holders



APPLICATION:

Safe clamping of the tool set when mounted or removed and also during the change of knives with TOK tools.

DESIGN:

Easy tensioning by means of clamping lever.

Shank mm	DT	Order No.
SK 40	◇	10002577
HSK 63 F	◇	10002580
HSK 85 (Powerlock)	◇	40015764

Installation devices for other interfaces on demand.

Installation devices

Masterclamp



APPLICATION:

Fast and safe mounting and clamping of tools in chucks, on cutter abors and with saw blade flanges.



for chucks	Order No.
HSK 25	10163751
HSK 32 (C3)	10163752
HSK 40 (C4)	10163753
HSK 50 (SK 30)	10163754
HSK 63 (SK 40)	10163755
HSK 80	10163756
SK 50	10163757
HSK 100	10163758

BSP srl

Str. della Fornace Vecchia
61122 Pesaro
Italy

Tel: +39 0721 402093/400665

Fax: + 39 0721 26627

www.bsppesaro.com

info@bsppesaro.com